

Section 35 – Urban Development, Construction Supervision, Construction, Housing and Cultural Heritage Protection

Section 35 serves as the central Construction Section of the Cologne Government Regional Office, where comprehensive expertise in structural engineering and in building, planning and cultural heritage management laws and regulations is pooled.

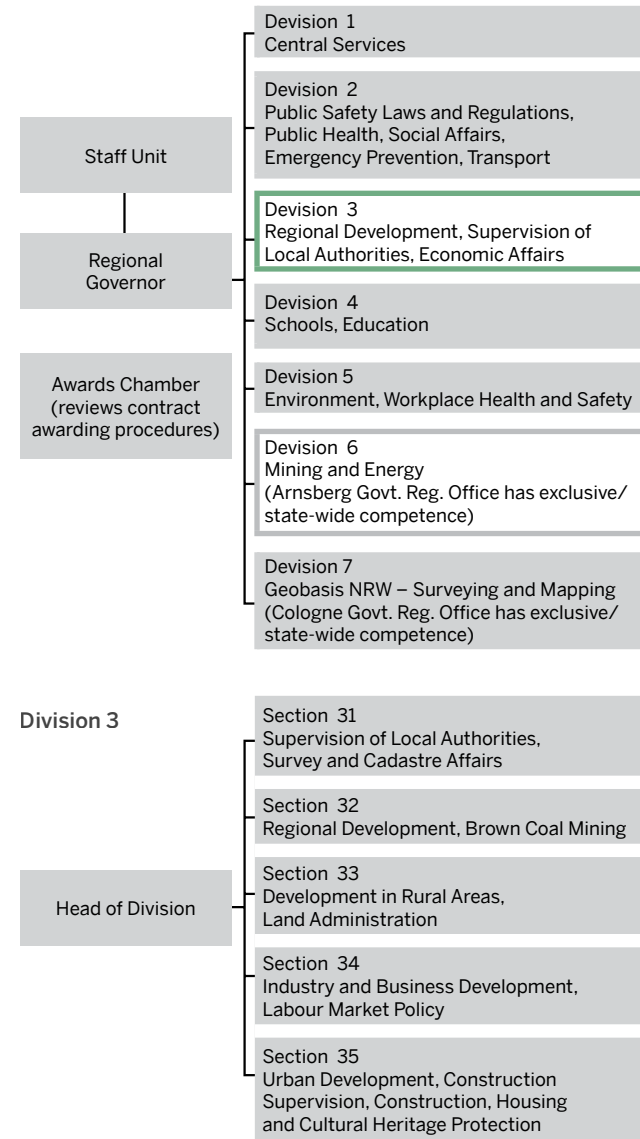
The section is also the supervisory body in terms of individual rent assistance and housing assistance. Furthermore, it supervises counties and local councils in the fields of building and cultural heritage management laws and regulations. With regard to state-owned architectural and archaeological cultural heritage sites, Section 35 acts as the Cultural Heritage Management Authority at the local level with responsibility for inspecting state-funded construction projects.

In addition, Section 35 decides on public sector construction projects and on fire prevention installations and systems, grants approvals for county and town maps, and reviews applications for the construction of large-scale retail projects. Moreover, eligible owners of buildings located within the Cologne/Bonn Airport noise abatement zones can file applications for noise insulation grants with Section 35.

Last but not least, Section 35 appropriates funds for urban development and cultural heritage management projects.



Organisational Chart



We Are There to Help You

Regional development, supervision of local authorities, spatial and regional planning, land administration, urban development, and economic development and business promotion in general: Division 3 of the Cologne Government Regional Office is a competent partner to whom you can turn for advice and support in all these matters.

Are you interested to learn more about the Cologne Government Regional Office? We will be happy to send you more detailed information – just give us a call or email us:

Public Relations: + 49 221 147-4362
oeffentlichkeitsarbeit@brk.nrw.de
Press: + 49 221 147-2147
pressestelle@brk.nrw.de



Cologne Government Regional Office
Bezirksregierung Köln
Zeughausstraße 2–10
50667 Köln

+ 49 221 147-0
+ 49 221 147-3185
poststelle@brk.nrw.de
www.brk.nrw.de
facebook.com/BezirksregierungKoeln
twitter.com/BezRegKoeln



Developing the Region. Promoting Business. Division 3: A Brief Outline



Section 31 – Supervision of Local Authorities, Survey and Cadastre Affairs

In its capacity as supervisory body for the 99 city and local councils and the 8 counties of the Cologne regional government district, Section 31 performs a wide range of functions including

- auditing counties' and local councils' budgets and providing advice on financial matters, managing the regime governing financial equalisation between local councils
- licensing of undertakings, ad-hoc or joint authorities and foundations owned or run by local councils, electoral law and public service regulations
- issues pertaining to co-operation between local authorities, and local government constitutional law.

In the field of surveying, Section 31 supervises the cadastre authorities, the committees of experts who make appraisals of the value of real property, and the chartered land surveyors. In addition, the section oversees and mentors the training of land surveyors, geomatic engineers and surveying trainees. Currently, Section 31 guides and assists the cadastre authorities with the integration of existing local and regional cadastral data into the uniform national Official Cadastral Information System (ALKIS®).

Section 32 – Regional Development, Brown Coal Mining

Section 32 serves as the regional planning authority. It sets up the Regional Policy Plan for the government district in co-operation with the Regional Development Council. Together with the Brown Coal Committee it formulates the regional development objectives for the brown coal planning area and designates the sites for the relocation of those people living in prospective mining areas, while seeing to it that the social interests of those affected by the mining operations are adequately taken into account. One of the tasks of Section 32 is making sure that the objectives contained in the Regional Policy Plan are attained, which is why it has to be involved in all regional planning activities and projects. At the same time, this approach helps implement the clean energy transition (renewable sources of energy, power plants providing maximum operating flexibility) right from the planning stage. In addition, the section's terms of reference include regional planning harmonisation procedures with regard to certain pipelines, cables etc. and determination of the routes of state highways proposed to be constructed or altered. Section 32 also co-ordinates cross-border regional policy co-operation with Belgium and the Netherlands.

Section 33 – Development in Rural Areas, Land Administration

Responsibility for the development in rural areas rests with Section 33. One of its priorities are the reorganisation of land holdings where conflicting land use interests have to be resolved, e.g. in connection with road construction or brown coal mining projects. The section thus also makes a major contribution towards implementing nature conservation and water management measures and improving the competitiveness of the farming and forestry sectors.

Section 33 initiates and co-ordinates a wide range of privately and publicly financed projects in a move to foster an integrated and comprehensive approach to the development of rural areas. Examples include village renewal projects including conversion of buildings and sites etc., infrastructure projects to promote tourism, and improvement of basic services and utilities. Other promotional activities benefiting, for instance, the Eifel and the Selfkant regions, are designed to help those regions implement their own development strategies under the LEADER programme. The LEADER scheme (which in French stands for Liaison entre actions de développement de l'économie rurale, in English roughly: integrated action for rural development) was launched in 1991 in an effort to foster sustainable development in rural areas in the EU. The programme's key objectives are strengthening competitiveness, fostering cultural activities, improving the natural environment, rehabilitating buildings of outstanding national or international importance, and promoting tourism. Improving access to the full spectrum of services of general interest is another example of the section's strategy to promote the development of rural areas as locations for living and business.

Section 34 – Industry and Business Development, Labour Market Policy

When it comes to providing advice and support in connection with projects in the fields of industry and business, innovation, qualification, continuing education and training, and tourism, Section 34 is one of the earliest ports of call. The development of tourism in the Eifel National Park is a case in point.

The remit of Section 34 for instance includes issuing certificates of exemption from VAT in respect of cultural or educational programmes and services.

Another important task of the section is reviewing the prices for government contracts, e.g. for the armed forces, and the contract awarding procedure where a complaint has been filed. Furthermore, Section 34 acts as the supervisory body in relation to certain business establishments, e.g. chimney sweep businesses or smaller mutual insurance companies.

In addition, the section's terms of reference include official recognition of engineering qualifications obtained abroad, and the implementation of projects under various labour market policy programmes launched by the North Rhine-Westphalia state government, such as the Education Cheque, the Jobs for Youths and the NRW Consensus on Vocational Training initiatives.



Deutsch-Belgischer
Naturpark
Hohes Venn-Eifel